

## **ALSPEX Building Consultants Inc.**

Member of: IBEC, OACETT, OBEC & CSC



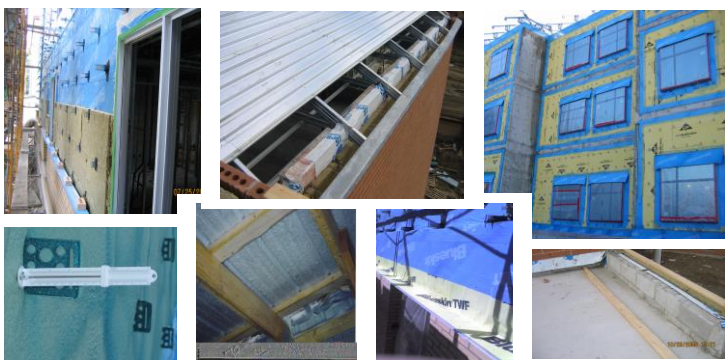
### **Roofing / Waterproofing**

- Preparation of Project Manual for Roof & Waterproof Repair/Replacement
- Inspections/Investigations/Assessments
- Asset Management Programs
- Tapered Insulation Design
- Life Cycle Cost Analysis
- Condition Assessments
- Leak Investigation
- Cut-Test Analysis



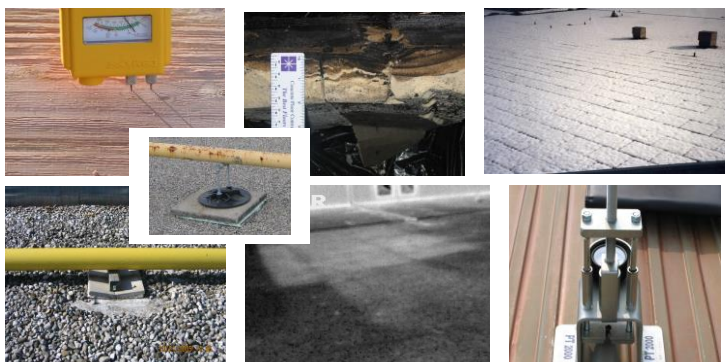
### **Façade**

- Preparation of Project Manual for Facade Remediation
- Inspections/Investigations/Assessments
- Water Penetration Investigations
- Window Installation Inspections
- Condition Assessments
- Shop Drawing Review
- Construction Review
- Wall Assembly Analysis



### **Air/Vapour/Thermal Barriers**

- Thermographic Scans and Analysis
- Density Sampling and Verification
- Product Evaluation and Analysis
- Air/Vapour Barrier/Thermal Review
- Adhesion/Cohesion Testing
- Inspection and Testing
- Condition Assessment
- Glazing and Sealants
- Smoke Seal Testing



### **Consulting & Specialties**

- Thermography and Thermal Analysis
- Contract Administration, Payment Certificates, Substantial Performance
- Preparation of Project Manual
- Moisture Content Verification
- Gas Line Support Review/Design
- Fastener Pull-Out Testing
- Bidding and Bid Review
- ACAD Services

## **ALSPEX Building Consultants Inc.**

66 Westlawn Drive, Hamilton, Ontario, L9B 2K9  
Tel: 905-575-0038 Fax: 905-575-0038 E-mail: [info@alspex.ca](mailto:info@alspex.ca)